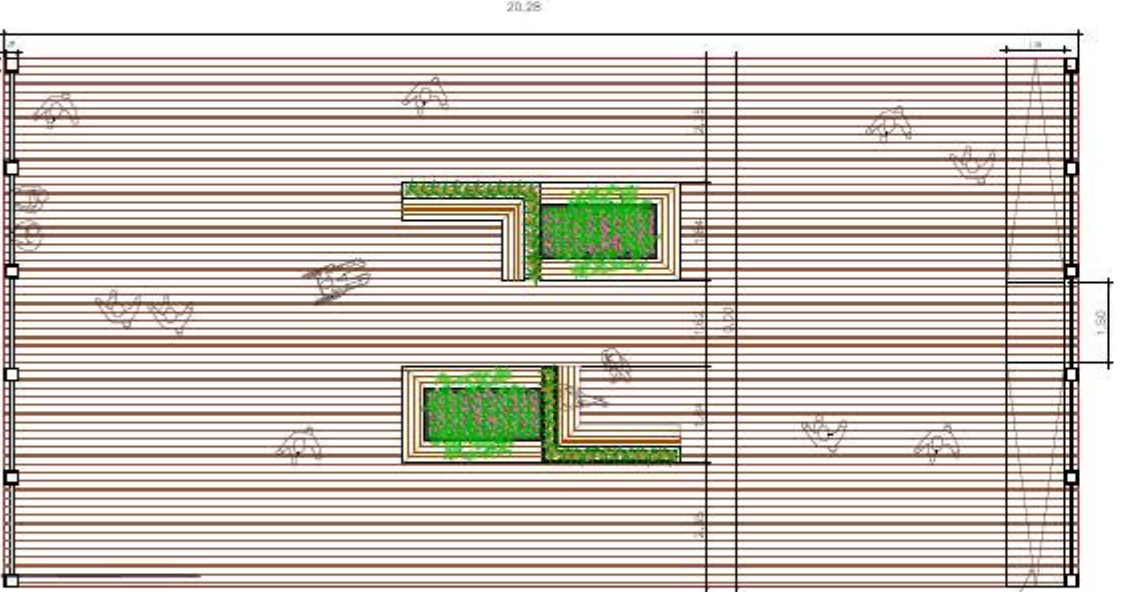
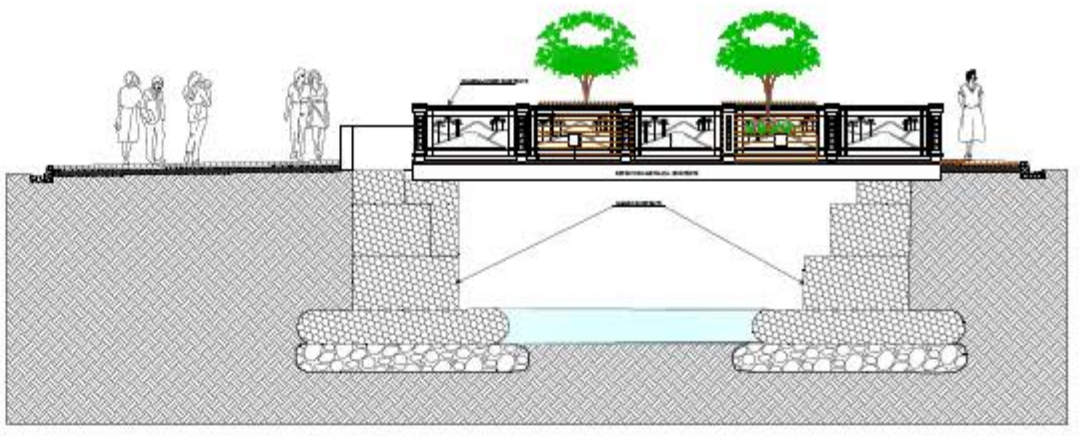




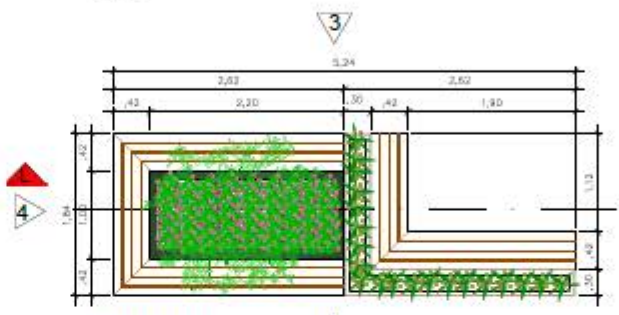
ESTRUTURA EXISTENTE
Escala 1/50



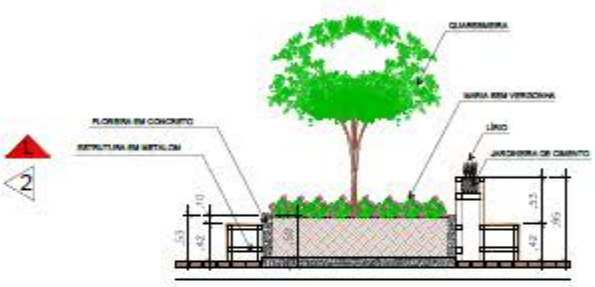
MADEIRAMENTO A SER EXECUTADO
Escala 1/50



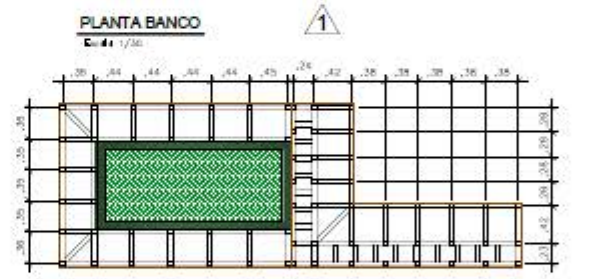
VISTA LATERAL
Escala 1/50



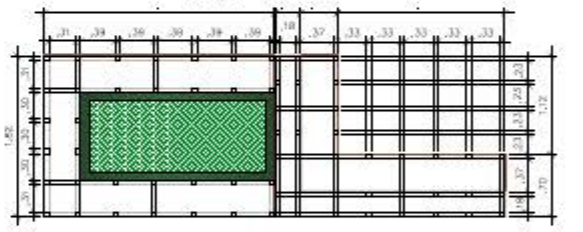
PLANTA BANCO
Escala 1/30



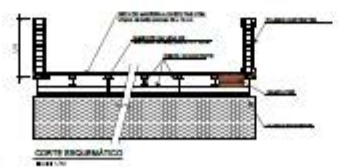
CORTE LL - BANCO
Escala 1/30



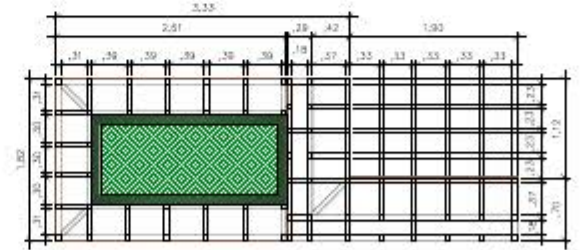
ESTRUTURA BANCO - EIXOS
Escala 1/30



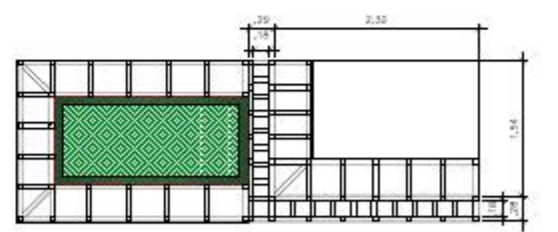
ESTRUTURA BANCO - NÍVEL DA BASE
Escala 1/30



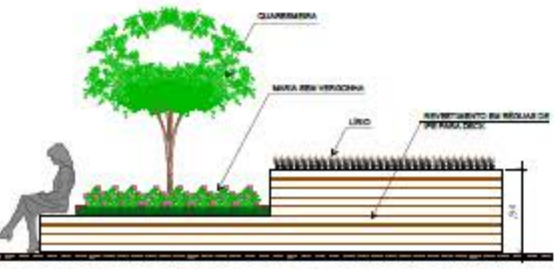
CORTE ESQUERDA
Escala 1/30



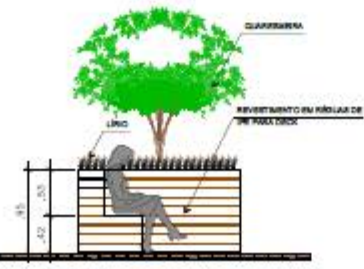
ESTRUTURA BANCO - NÍVEL DO ASSENTO
Escala 1/30



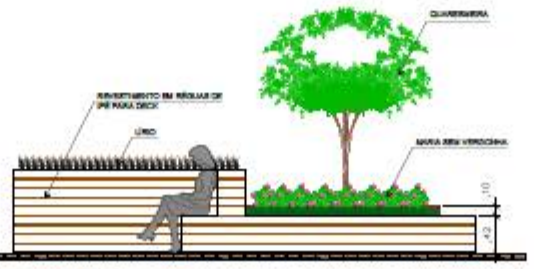
ESTRUTURA BANCO - NÍVEL ENCOSTO/FLOREIRA
Escala 1/30



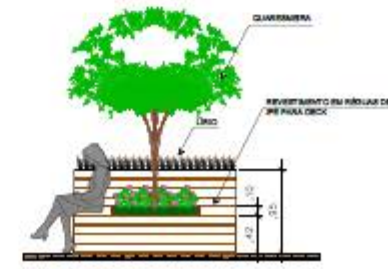
ELEVÇÃO 1
Escala 1/30



ELEVÇÃO 2
Escala 1/30



ELEVÇÃO 3
Escala 1/30



ELEVÇÃO 4
Escala 1/30

PREF. MUNICIPAL DA ESTÂNCIA DE CAMPOS DO JORDÃO SECRETARIA DE OBRAS		TÉCNICO REGISTRO Nº DATA
PROJETO: BENS PÚBLICOS PARA A CRIANÇA TÍPICA OBJETIVO: REQUALIFICAÇÃO DO DECK LOCAL: AV. BR. OESTE GRANDE RUA BANCO SOUT ALÉM - ARARAQUÁ		PLANO: DATA
DESENHADO POR: CARLOS EDUARDO ARQUITETO R. S. N. 108	ELABORADO POR: CARLOS EDUARDO ARQUITETO R. S. N. 108	PLANO: DATA